

THIS DRAWING IS UNPUBLISHED.

RELEASED FOR PUBLICATION

2002

LOC 1

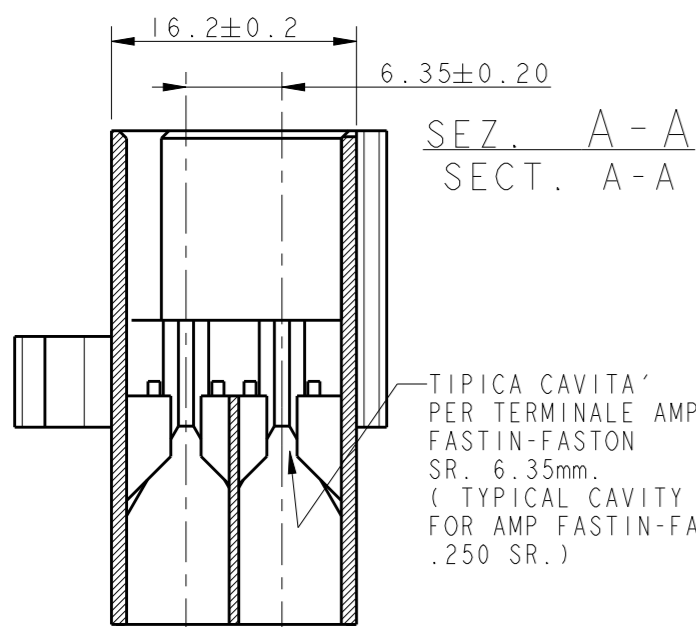
DIST -

REVISIONS

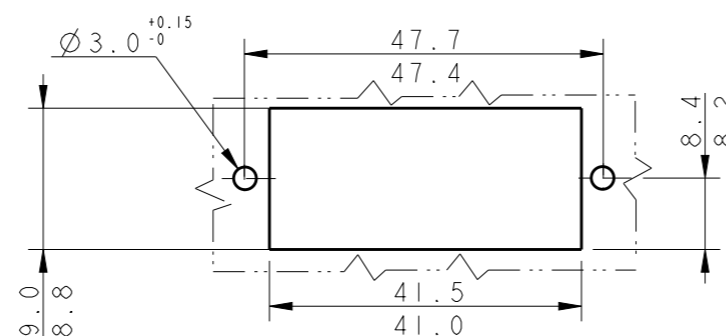
© COPYRIGHT 2002

ALL RIGHTS RESERVED.

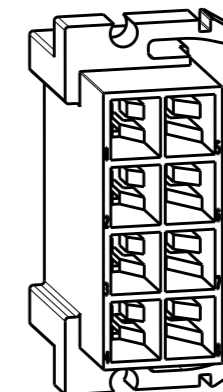
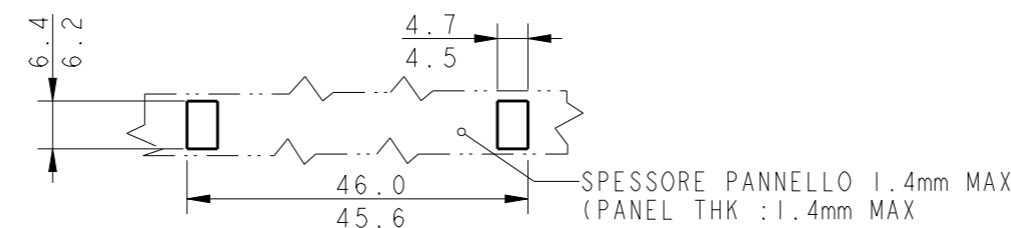
P	LTR	DESCRIPTION	DATE	DWN	APVD
	U3	REVISED AND REDRAWN, ET00-0098-02	20 SEP 2002	HY	CT
	U4	REVISED PER ECO-09-025699	19DEC09	KK	AEG
	U5	ECR-10-022530	14JUN11	KK	HMR
	U6	REVISED PER ECR-15-014177	11NOV2015	PK	TD



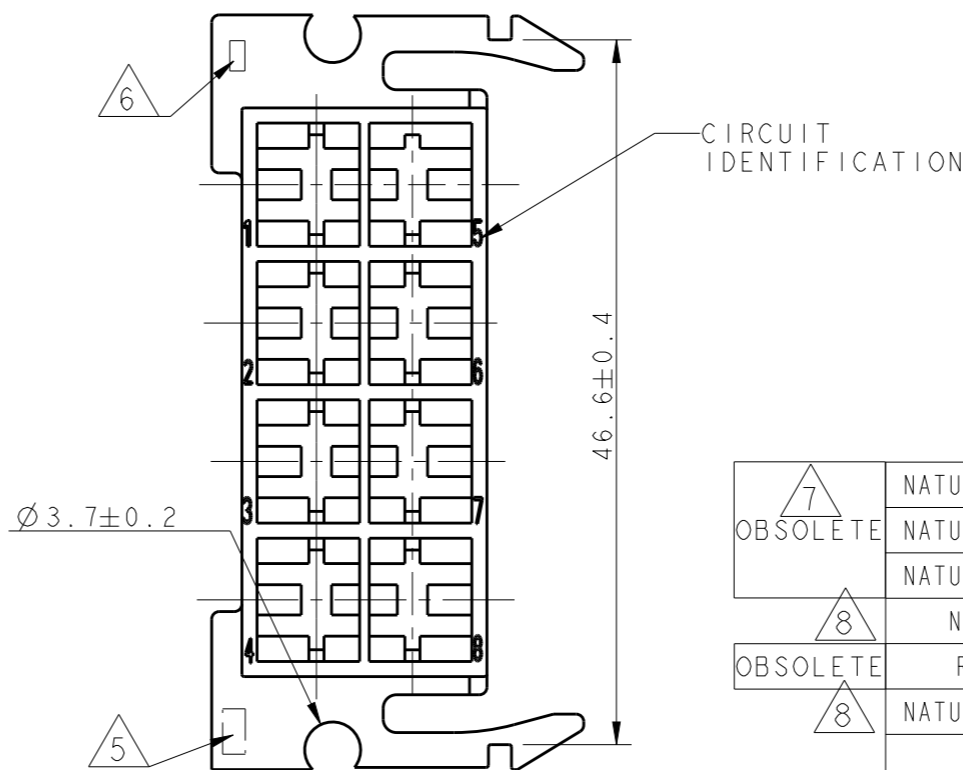
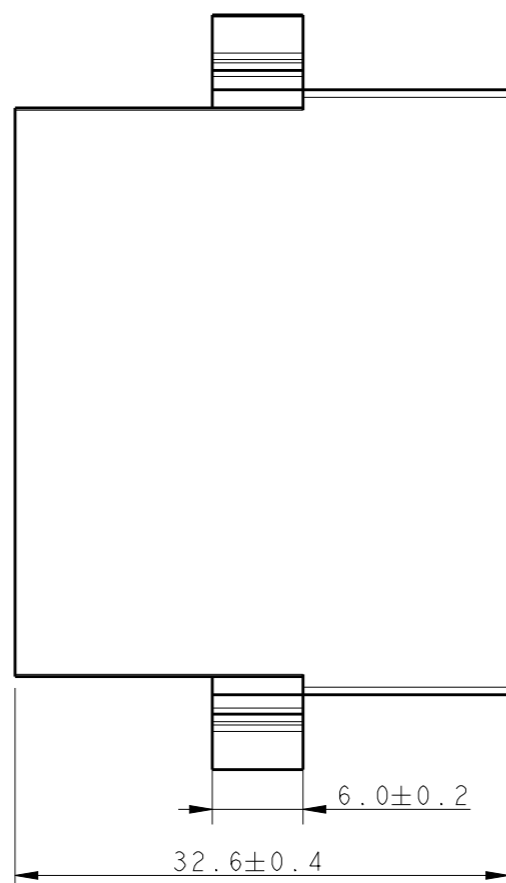
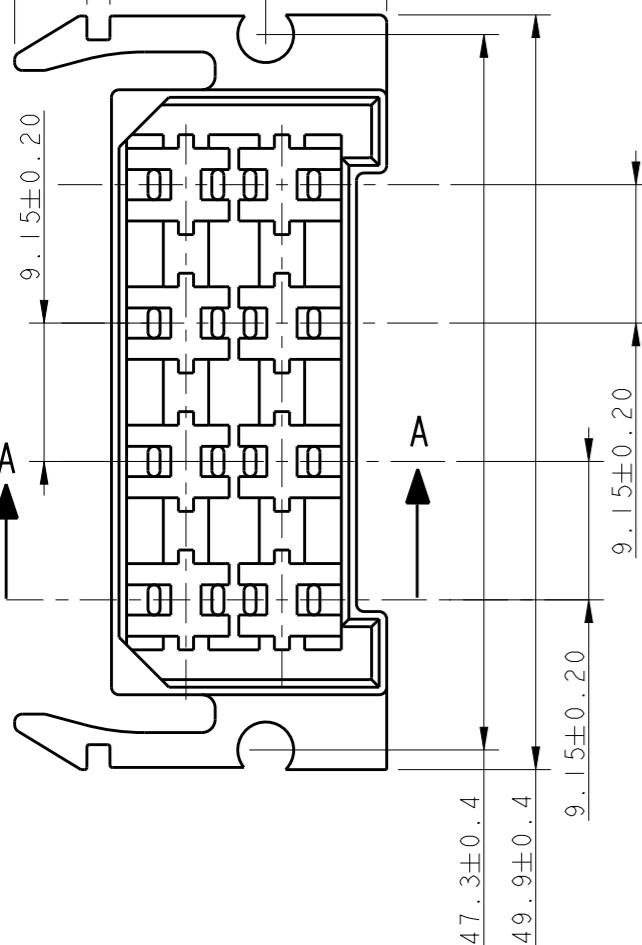
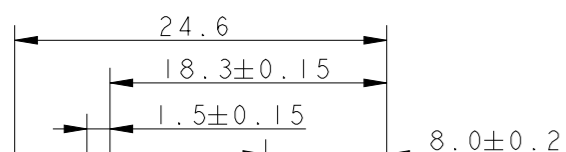
DIMENSIONI PER IL MONTAGGIO (MOUNTING DIMENSIONS)
PER IL BLOCCAGGIO PERPENDICOLARE AL PANNELLO DEI BLOCCHETTI
P/N 280430 O P/N 163008
(FOR FASTENING HSG P/N 280430 OR P/N 163008 PERPENDICULAR WITH PANEL.)



DIMENSIONI PER IL MONTAGGIO (MOUNTING DIMENSIONS)
PER IL BLOCCAGGIO PARALLELO AL PANNELLO DEI BLOCCHETTI
P/N 280430 O P/N 163008
(FOR FASTENING HSG P/N 280430 OR P/N 163008 IN PARALLEL WITH THE PANEL.)



- 1 RISERVATO PER TE AMP DE FRANCE (RESTRICTED FOR TE AMP DE FRANCE)
- 2 RISERVATO "PHILCO™" (RESTRICTED FOR "PHILCO™")
- 3 VERSIONE NON DISPONIBILE IN TE AMP ITALIA (NOT AVAILABLE FROM TE AMP ITALY)
- 4 VERSIONE "GLOW WIRE" ("GLOW WIRE" VERSION)
- 5 MARCHIO DI FABBRICA AMP (AMP TRADE MARK)
- 6 NUMERO DI IMPRONTA STAMPO (MOULD CAVITY IDENTIFICATION NO)
- 7 OBSOLETE PARTS: OBSOLETE CIS STREAMLINING PER D.RENAUD/D.SINISI
- 8 280430-X IS REPLACED BY 163008-X



OBSOLETE	7	NATURALE (NATURAL)	ZYTEL 135F	4	4 280430 0	U
		NATURALE (NATURAL)	PA 6.6 (PA 6.6 UNFILLED)	3	3 280430 0	U
		NATURALE (NATURAL)		2	2 280430 0	U
	8	NERO (BLACK)			0 280430 5	U
OBSOLETE		ROSSO (RED)	PA 6.6 (PA 6.6 UNFILLED)		0 280430 1	U
	8	NATURALE (NATURAL)			0 280430 0	U
		COLORE (COLOUR)	MATERIALE (MATERIAL)		NUMERO (PART NUMBER)	REV

THIS DRAWING IS A CONTROLLED DOCUMENT.		DWN H. YAALI 10JUL2002
DIMENSIONS: mm		CHK C. TARTARI
TOLERANCES UNLESS OTHERWISE SPECIFIED:		APVD -
0 PLC ±-	±0.3	PRODUCT SPEC 108-20020
1 PLC ±-		APPLICATION SPEC -
2 PLC ±-		WEIGHT 8.16 g
3 PLC ±-		CUSTOMER DRAWING
4 PLC ±-		
ANGLES ±-	±2°	
MATERIAL SEE TABLE	FINISH SEE TABLE	

TE TE Connectivity			
NAME FASTIN-FASTON* Connector, .250inch srs. TAB HOUSING, 8 POSITIONS			
SIZE	CAGE CODE	DRAWING NO	RESTRICTED TO
A3	00779	C-280430	-
SCALE 2:1		SHEET 1 OF 1	REV U6